



938 South Andreasen Drive, Suite E
Escondido, CA 92029 USA

Phone: +1-760-738-1508

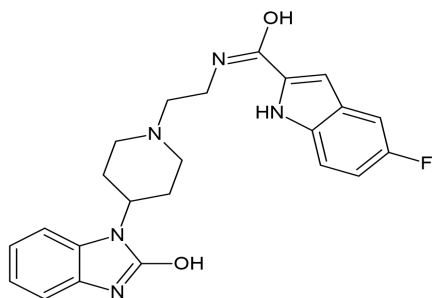
Fax: +1-760-738-1530
info@auroramedbiochem.com
www.auroramedbiochem.com

PLD Inhibitor, FIPI

ALTERNATE NAME: 5-fluoro-*N*-[2-[4-(2-oxo-3*H*-benzimidazol-1-yl)piperidin-1-yl]ethyl]-1*H*-indole-2-carboxamide; FIPI

CATALOG #: AUR10283

STRUCTURE:



MOLECULAR FORMULA: C₂₃H₂₄FN₅O₂

MOLECULAR WEIGHT: 421.48

CAS#: 939055-18-2

APPEARANCE: Off-white solid

SOLUBILITY: DMSO (100 mg/ml)

PURITY: ≥98% by HPLC

STORAGE: Store at +2°C to +8°C; Protect from air and light

DESCRIPTION: FIPI (5-Fluoro-2-indolyl deschlorohalopemide), a derivative of halopemide, is a potent and selective inhibitor of phospholipase D with IC₅₀ of 25 nM and 20 nM for PLD1 and PLD2, respectively.

HANDLING: Do not take internally. Wear gloves and mask when handling the product! Avoid contact by all modes of exposure